

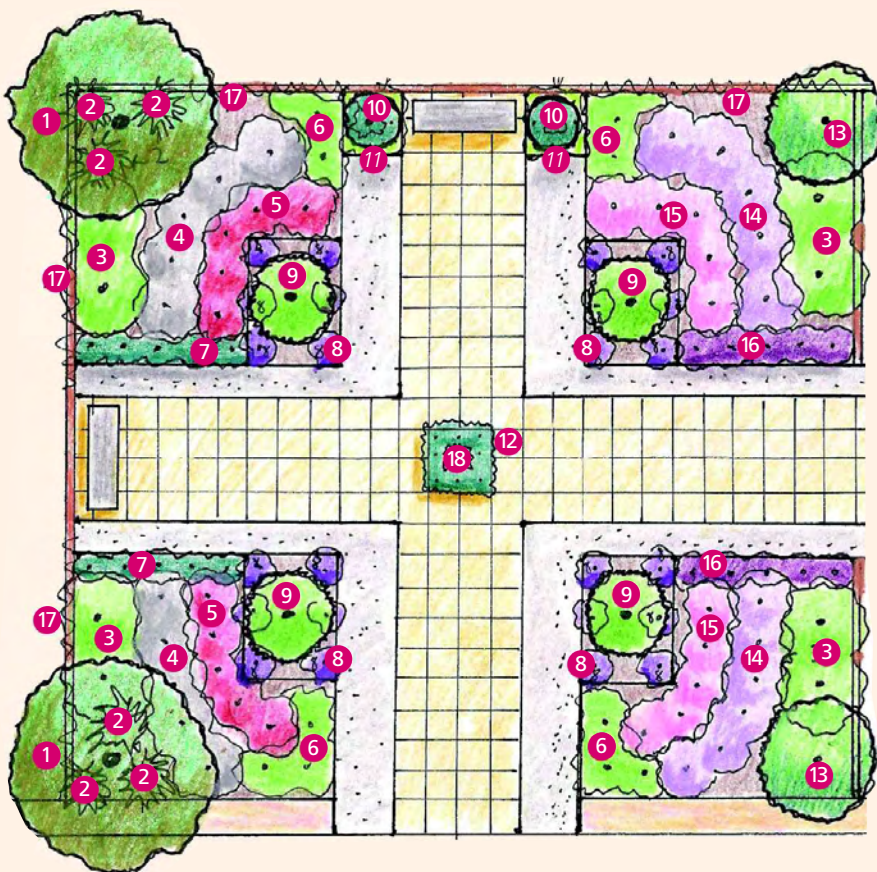


AUSTRALIAN ARID LANDS
BOTANIC GARDEN

EREMOPHILA COURTYARD

Save water, save money, save the planet.
That's AridSmart!

AridSmart
THE FUTURE OF GARDENING



Plant Species

- | | |
|--|--|
| 1 <i>Geijera parvifolia</i> | 11 <i>Rostellularia adscendens</i> |
| 2 <i>Dianella revoluta</i> | 12 <i>Prostanthera aspalathoides</i> |
| 3 <i>Eremophila lucida</i> | 13 <i>Eremophila bignoniiflora</i> x <i>polyclada</i> x <i>divaricata</i> |
| 4 <i>Eremophila glabra</i> (CSR form) | 14 <i>Eremophila nivea</i> |
| 5 <i>Eremophila maculata</i> ssp. <i>brevifolia</i> | 15 <i>Eremophila maculata</i> (pale pink) |
| 6 <i>Eremophila biserrata</i> | 16 <i>Eremophila macdonellii</i> (Everard Ranges) |
| 7 <i>Eremophila veronica</i> | 17 <i>Pandorea doratoxylon</i> |
| 8 <i>Eremophila hygrophana</i> | 18 <i>Sarcostemma viminale</i> |
| 9 <i>Callitris glaucophylla</i> | |
| 10 <i>Myoporum montanum</i> | |

Water Use

AridSmart Eremophila Courtyard
22,400 litres per year (once established)



Average Home Garden (with lawn)
100,000 litres per year



How to create this garden at home

- › For a formal 'courtyard' look, use pavers and gravel to create straight paths that intersect at right angles to form a central focal point.
- › Incorporate an elegant urn to form the focal point and position simple benches at each end of the paths to view the urn and the surrounding garden beds.
- › Use compact low growing eremophilas along the paths to create small hedges.
- › Behind the hedges, use different eremophila species to form patterns of contrasting foliage that mirror the bed on the other side of the path.
- › To add to the formal feel of this garden, incorporate four tall erect conifers.
- › We have given this courtyard garden a room-like effect by training climbers to cover the mesh panels.